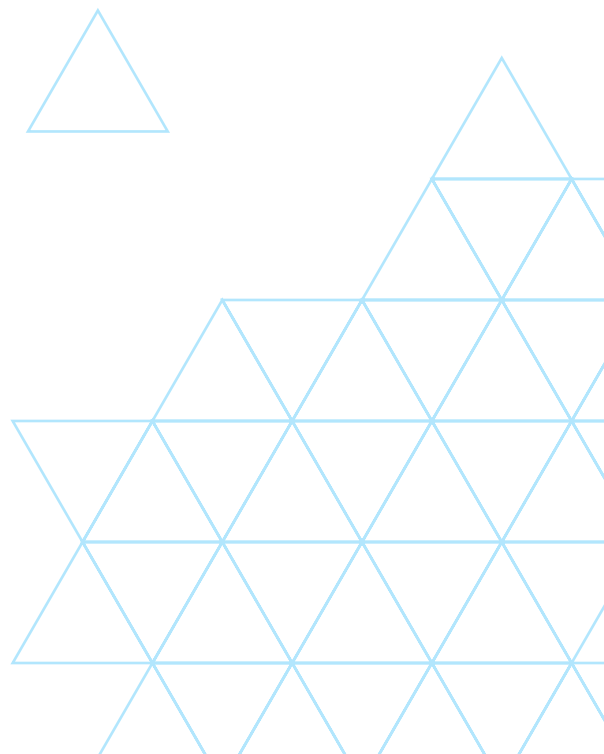


 **INCINER8**  
WWW.INCINER8.COM

# INCINER8 I8-M15 TECHNICAL DATASHEET



The i8-M15 is our smallest , plug and play medical incinerator. Developed for use in smaller health clinics, laboratories and regional hospitals. It is well suited for use as a mobile incinerator due to its small footprint and simple setup.



## INDUSTRY CORETEX LEADING INSULATION

Coretex insulation - Triple insulation Coretex technology uses a combination of high-density insulation board, bespoke refractory concrete and robust steel to deliver the ultimate incineration insulation.



## MISTRAL TECHNOLOGY

Our Mistral technology increases airflow for when you need a stronger combustion reaction for more volatile waste. Additional airflow gives the combustion chamber more oxygen when it needs it most for an unbeatable efficiency and increased incinerating potential.



## LOAD CAPACITY

Inciner8 uses four main size guides within our comprehensive range to differentiate our models, from S to XL. This allows us to provide you with a machine that perfectly fits your needs and your waste stream.



## LOADING METHOD

Incinerators come in two forms of loading capabilities: top and front, Front-loading increases accessibility and ease of use for manual handling and are ideal for the medical and pet cremation sectors. It allows ash to be easily and carefully accessed and makes the overall accessibility into the primary chamber easier for the operator.

Our medical incinerators are designed to burn Type I - IV pathological waste and infectious and contaminated "red bag," surgical dressings, plastic test devices and other wastes. If you are paying a high fee to haul these waste materials to a disposal site, now is the time to consider the onsite Incineration alternative. On-site incineration is a thorough, fast, and cost effective way to dispose of waste. Our various models are engineered to meet strict air emission regulations without offensive smoke or odour.



## i8-M15 FEATURES

- Cladded for heat retention, cool touch & hygiene control
- Rapid, complete and efficient medical waste disposal
- Patented safety handle for easy access to chamber
- High quality refractory lining and insulation
- Easy to use CE2 control panel
- Programmable temperature control for complete combustion
- Secondary chamber\* with 2 second retention time
- Fast pre-heat and continual high temperature performance
- Low energy consumption levels



\* Our primary and secondary combustion chambers are constructed from superior grade steel and state-of-the-art monolithic concrete refractory with a unique concave design to prevent cold spots and maximize heat retention during the start-up and combustion processes.

When the secondary burner is activated a flame curtain is created which ensures the thermal decomposition of smoke and harmful emissions to produce a clean, odourless vapour exiting the chimney stack.

# TECHNICAL BREAKDOWN

model: i8-M15

## HT THERMOCOUPLES

Dual-burner incineration system with single-point temperature control to sustain high-temperature secondary burn performance.

## SECONDARY CHAMBER

Retains and re-burns the exhaust gases for minimum of 2 seconds.

## CHIMNEY STACK

Stainless steel stack for longevity. Fitted with dispersion cap as standard.

## PRIMARY CHAMBER

Chamber designed for maximum air flow and circulation which in turn improves efficiency and total burn time.

## SAFE USE HANDLES

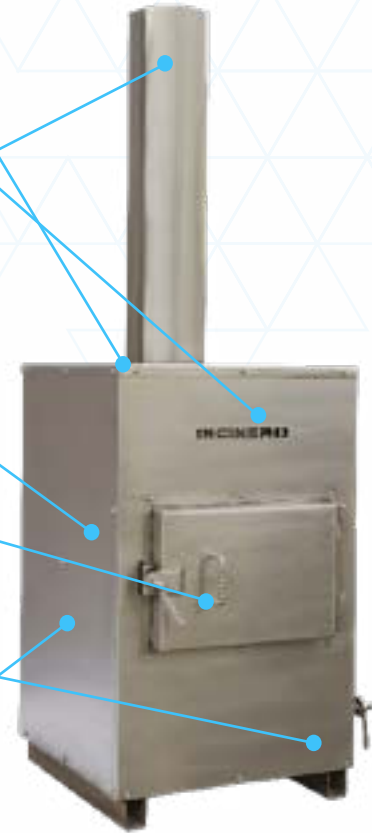
Easy to open and close loading door. Designed to increase operator safety.

## COOL TOUCH CLADDING

Steel cladding to reduce risk of infection and increase longevity of system.

## LOW NOX BURNERS

These are some of the cleanest, most efficient burners available today. These can be supplied as gas or oil fired.



## HOW INCINERATION WORKS

Incineration is a waste treatment process which utilizes the combustion of organic substances contained within materials to convert waste into ash, heat and flue gas. The ash residue is mostly formed by inorganic constituents of the waste which may take the form of solid lumps or powder.

Heat produced by the incineration process can be fed into a heat exchanger to produce hot water or air which can be used for cleaning or heating purposes. The remaining flue gases are passed through pollution control devices in the form of a secondary combustion chamber or additional filtration (if required) and then expelled to atmosphere.

## APPLICATIONS

Our versatile range of medical incinerators are designed for a wide range of waste types. This particular model benefits from a front loading design and very simple operation process. Ideal as a stand-alone machine where limited staff are available to operate.

- Type I-IV pathological waste
- Infectious and contaminated 'red bag'
- Surgical dressings
- Plastic testing devices & equipment
- Vials & syringes
- Yellow bags
- Bandages and gauzes
- Covid PPE waste
- Out of date pharmaceutical waste



For additional information, or to speak to one of our expert team:

Call  
+44 (0) 1704 884020

Email  
sales@inciner8.com

 **INCINER8**  
www.inciner8.com

# TECHNICAL SPECIFICATION

model: i8-M15

## OPERATIONAL SPEC

## PHYSICAL SPEC

Combustion Chamber Volume (m <sup>3</sup> )	0.13m <sup>3</sup>	Assembled L/W/H (mm)	750 x 750 x 2720
Burn Rate (Kg p/h)	Up to 20Kg	Assembled Weight (Kg)	652kg
Fuel Consumption (Ltrs p/hour)	4-5ltrs	Door Size (mm)	500 x 390mm
Time To Temp	30 mins	Thermocouples (Qty)	1
Gas retention Time (Seconds)	2 secs	Steel Thickness (mm)	3mm
Loading Method	FrontLoad	No. Of Burners	2
Fuel Options	Oil/Gas/LPG	Refractory Composition	Coretex
Electricity Supply	110v or 230v	Operating Footprint	12m <sup>3</sup>
Control Panel (IP Rating)	IP54	Cool Touch Cladding	Yes
Heat Recovery	N/A	Viewing Portal	No
Auto Ash Removal	N/A	Tertiary Air Fan	Yes
Auto Loader Compatible	No		
Remote Monitoring	No		

\*The above figures are guidelines ONLY.

Ecoflam burners are renowned worldwide for providing high efficiency and reliable operation with significant energy savings and feature extreme ease of installation, maintenance and flexible boiler-burner matching. This model is fitted with low NOx burners as standard to ensure a complete and clean burn cycle, this reduces installation time and maintenance.

## ECOFLAM BURNER SPECIFICATIONS

PARAMETER (1/2 HR AV)	LIMITS	MEASURED
Total Dust	30mg/m <sup>3</sup>	12mg/m <sup>3</sup>
Sulphur Dioxide	200mg/m <sup>3</sup>	2.4mg/m <sup>3</sup>
Nitrogen Dioxide	400mg/m <sup>3</sup>	60mg/m <sup>3</sup>
Carbon Monoxide	100mg/m <sup>3</sup>	78.3mg/m <sup>3</sup>

\*The above figures are guidelines ONLY.

## Ecoflam

- MAX 1-12 have electrical frequency 50-60 Hz
- High efficiency fan ventilation system (HPV)
- Low NOx version class 3 with yellow flame
- Designed in compliance with current regulations
- ISO 9001 and VISION 2000 certification
- All burners are fire tested



NB: picture for illustration purposes only

## AVERAGE EMISSIONS / EU STANDARDS

All of our secondary combustion chambers are designed to operate at 850 - 1200°C to re-burn waste gases which prevents smoke, odours and harmful emissions. Dioxins and similar gaseous components are destroyed by a combination of homogeneous high temperatures, excess oxygen levels and sufficient gas residence time in the secondary chamber which our incinerators achieve.

Emissions are largely a product of the waste materials therefore care should be taken when selecting

**CALL INCINER8 AND START BUILDING SOLUTIONS  
TO YOUR WASTE CHALLENGES TODAY!  
+44 (0) 1704 884020 OR  
EMAIL WWW.INCINER8.COM**

For additional information, or to speak to one of our expert team:

Call  
+44 (0) 1704 884020

Email  
sales@inciner8.com

 **INCINER8**  
www.inciner8.com